

VENTURI TM2 EJECTORS



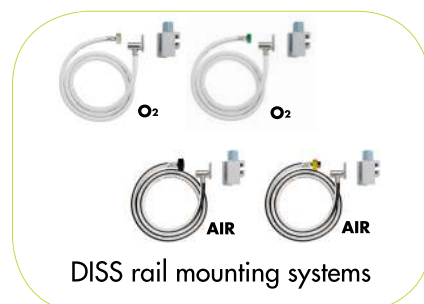
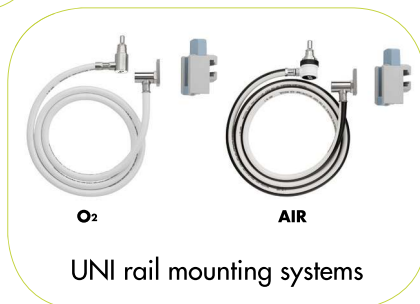
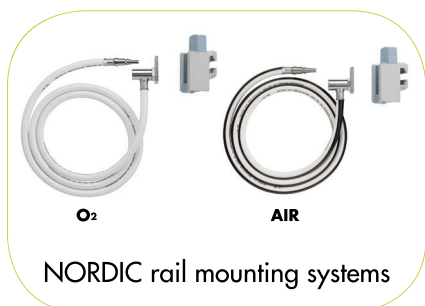
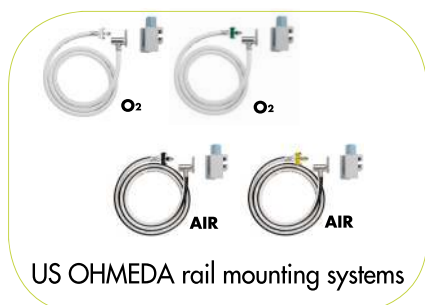
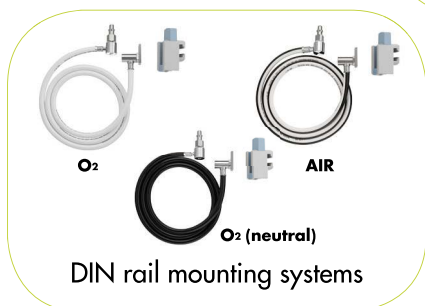
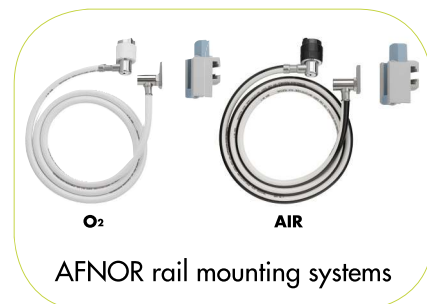
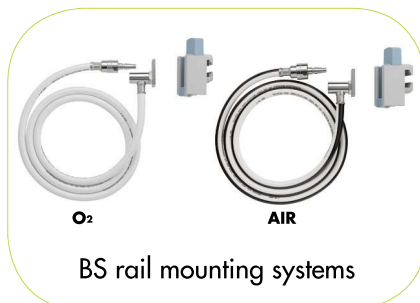
SUCTION

VENTURI TM2 EJECTORS



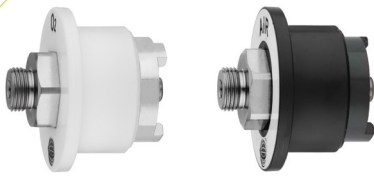
**TECHNOLOGIE
MEDICALE**

RAIL MOUNTING SYSTEMS

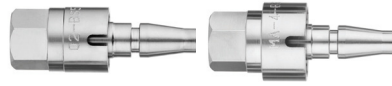


Other standards available upon request.

DIRECT PROBES



O₂ **AIR**
AFNOR direct probes



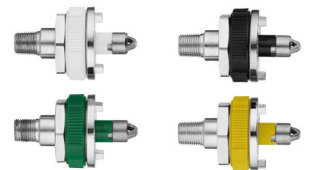
O₂ **AIR**
BS direct probes



O₂ **AIR**
CZECH direct probes



O₂ **AIR**
DIN direct probes



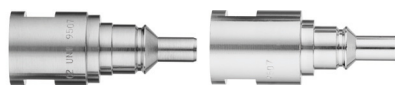
O₂ **AIR**
US OHMEDA direct probes



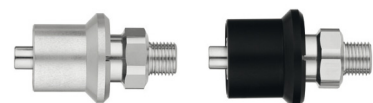
O₂ **AIR**
NORDIC direct probes



O₂ **AIR**
DISS direct probes



O₂ **AIR**
UNI direct probes



O₂ **AIR**
CARBUROS direct probes



Other standards available upon request.

VENTURI TM2 EJECTOR

The VENTURI TM2 ejector is used to create, to adjust and to measure a suction from a source of pressured gas on the wall or from a cylinder (oxygen or medical air). It enables to suck in liquids or mucus in the absence of vacuum pipeline network. The VENTURI TM2 ejector should be connected either to a source of pressured gas on the wall, using a direct probe or a rail mounting system, or to a cylinder through a pressure regulator fitted with a quick-release connector. The VENTURI TM2 ejector should be associated with a collection jar and a suction hose.

Main technical features:

Medical device of class IIa.

In compliance with the EN ISO 10079-3: 2014 standard

Inlet pressure: 4 bar $\pm 1/-0$ in compliance with the EN ISO 7396-1: 2007 standard.

	0-1000 mbar / 0-760 mmHg	0-250 mbar / 0-200 mmHg
Suction flowrate	40 l/min à 800 mbar 40 l/min à 608 mmHg	40 l/min à 250 mbar 40 l/min à 200 mmHg
Maximum vacuum	800 mbar ± 50 mbar 608 mmHg ± 38 mmHg	250 mbar ± 50 mbar 200 mmHg ± 38 mmHg
Limited gas consumption	60 l/min à 800 mbar 60 l/min à 608 mmHg	55 l/min à 800 mbar 55 l/min à 200 mmHg

- **Vacuum gauge protected by a plastic housing.** Easy cleaning.
- **Anodized aluminium body** ensuring a great robustness.
- Silencer: high performances.
- **Supplied in standard with a 100 ml safety jar** with plastic front filter to protect the device against any liquids' overflow.
- **3 in 1 system** (patented)
Device with a metal outlet tubing nipple integrated in the body of the VENTURI TM2: for a better safety, emergency suction can even be processed if running out of stock of filters or safety jars.
- **A unit serial number is engraved on the body of each device** ensuring its identification and traceability. 8 digits number indicating the manufacturing year and month as well as the unit serial number of the device.

Many versions available:

- Suction levels:
0-1000 mbar and 0-760 mmHg
0-250 mbar and 0-200 mmHg
- Available gases: OXYGEN - MEDICAL AIR
- Inlets: 12x100 F - 1/4G M - 1/8NPT F - 3/8G BSP F
- Analog or digital vacuum gauge
- Unit of measurement: mbar or mmHg
- Supplied with 100 ml safety jar with antibacterial front filter. The jar is made of polycarbonate. It is unbreakable and is fitted with an anti-overflow safety device.
- Also available with a 1/2G threaded outlet tubing nipple or a 150 or 500 ml safety jar with paper filter in the cover.
- Available connections to the wall outlet: direct probe or rail mounting system.

- Standards: AFNOR (French standard) - BS (British standard) - DIN (German standard) - US OHMEDA DIAMOND (American standard) - NORDIC (Scandinavian standard) - DISS (American standard) - UNI (Italian standard) ...
- Weight (with 100 ml safety jar and without direct probe): 500 g
- Dimensions (with 100 ml safety jar and without direct probe): Height 210 mm x Width 95 mm x Depth 110 mm

Use, cleaning and maintenance:

The adjustment of the VENTURI TM2 ejector must be carried out in closed circuit.

- Block the outlet of the VENTURI TM2.
 - Gradually turn the regulation knob to the left till the needle indicates the requested suction level on the vacuum gauge.
- Cleaning: use a disinfectant cleaner for medical devices. Leave to dry before using the device. Do not lay under water. Replace the silencer once a year.

Change the antibacterial filter of the safety jar after each patient.

For the 100 ml safety jar with plastic front filter it is no longer necessary to sterilize the jar except in case of accidental liquids' overflow or perforated filter.

For the 150 ml and 500 ml safety jars with paper filter in the cover disinfect the jars each time you change the filter.

The safety jars are autoclavable up to 134°C.

Consumables:

- 1 Tube of 10 antibacterial plastic filters
- 2 Box of 100 antibacterial paper filters
- 3 Silencer





V01

- Digital VENTURI TM2 ejector 0-250 mbar with 100 ml safety jar (antibacterial front filter).



V02


- VENTURI TM2 ejector 0-760 mmHg with 500 ml safety jar with paper filter (in the cover).



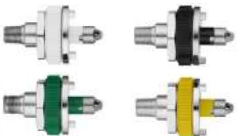
V03

- VENTURI TM2 ejector 0-1000 mbar with integrated tubing nipple mounted with medical AIR DIN rail mounting system with polycarbonate universal rail clamp.


SUCTION


AFNOR French Standard	VENTURI TM2 Ejectors	O ₂ 1000mbar	Air 1000mbar
Mounted with AFNOR direct probe 	ANALOG Ejector with 100 ml safety jar, plastic front filter Ejector with 150 ml safety jar, paper filter Ejector with 500 ml safety jar, paper filter Ejector with integrated outlet tubing nipple Ejector with 1/2G outlet tubing nipple DIGITAL Ejector with 100 ml safety jar, plastic front filter Ejector with 150 ml safety jar, paper filter Ejector with 500 ml safety jar, paper filter Ejector with integrated outlet tubing nipple Ejector with 1/2G outlet tubing nipple	20207 20211 20215 20223 20219 20267 20269 20271 20275 20273	20206 20210 20214 20222 20218 20266 20268 20270 20274 20272
BS British Standard	VENTURI TM2 Ejectors	O ₂ 1000mbar	Air 1000mbar
Mounted with BS direct probe 	ANALOG Ejector with 100 ml safety jar, plastic front filter Ejector with 150 ml safety jar, paper filter Ejector with 500 ml safety jar, paper filter Ejector with integrated outlet tubing nipple Ejector with 1/2G outlet tubing nipple	20227 20231 20235 20243 20239	20226 20230 20234 20242 20238
UNI Italian Standard	VENTURI TM2 Ejectors	O ₂ 1000mbar - 760mmHg	Air 1000mbar - 760mmHg
Mounted with UNI direct probe 	ANALOG Ejector with 100 ml safety jar, plastic front filter Ejector with 150 ml safety jar, paper filter Ejector with 500 ml safety jar, paper filter Ejector with integrated outlet tubing nipple Ejector with 1/2G outlet tubing nipple	20557 - 20567 20559 - 20569 20561 - 20571 20565 - 20575 20563 - 20573	20556 - 20566 20558 - 20568 20560 - 20570 20564 - 20574 20562 - 20572
CARBUROS Spanish Standard	VENTURI TM2 Ejectors	O ₂ 1000mbar - 760mmHg	Air 1000mbar - 760mmHg
Mounted with SPANISH direct probe 	ANALOG Ejector with 100 ml safety jar, plastic front filter Ejector with 150 ml safety jar, paper filter Ejector with 500 ml safety jar, paper filter Ejector with integrated outlet tubing nipple Ejector with 1/2G outlet tubing nipple	20247 - 20257 20249 - 20259 20251 - 20261 20255 - 20265 20253 - 20263	20246 - 20256 20248 - 20258 20250 - 20260 20254 - 20264 20252 - 20262
CZECH Czech Standard	VENTURI TM2 Ejectors	O ₂ 1000mbar - 760mmHg	Air 1000mbar - 760mmHg
Mounted with CZECH direct probe 	ANALOG Ejector with 100 ml safety jar, plastic front filter Ejector with 150 ml safety jar, paper filter Ejector with 500 ml safety jar, paper filter Ejector with integrated outlet tubing nipple Ejector with 1/2G outlet tubing nipple	20537 - 20547 20539 - 20549 20541 - 20551 20545 - 20555 20543 - 20553	20536 - 20546 20538 - 20548 20540 - 20550 20544 - 20554 20542 - 20552
NORDIC Scandinavian Standard	VENTURI TM2 Ejectors	O ₂ 1000mbar - 760mmHg	Air 1000mbar - 760mmHg
Mounted with NORDIC direct probe 	ANALOG Ejector with 100 ml safety jar, plastic front filter Ejector with 150 ml safety jar, paper filter Ejector with 500 ml safety jar, paper filter Ejector with integrated outlet tubing nipple Ejector with 1/2G outlet tubing nipple DIGITAL Ejector with 100 ml safety jar, plastic front filter Ejector with 150 ml safety jar, paper filter Ejector with 500 ml safety jar, paper filter Ejector with integrated outlet tubing nipple Ejector with 1/2G outlet tubing nipple	20437 - 20458 20441 - 20462 20445 - 20466 20453 - 20474 20449 - 20470 20317 - 20327 20319 - 20329 20321 - 20331 20325 - 20355 20323 - 20333	20436 - 20457 20440 - 20461 20444 - 20465 20452 - 20473 20448 - 20469 20316 - 20326 20318 - 20328 20320 - 20330 20324 - 20334 20322 - 20332

Also available with a rail mounting system.

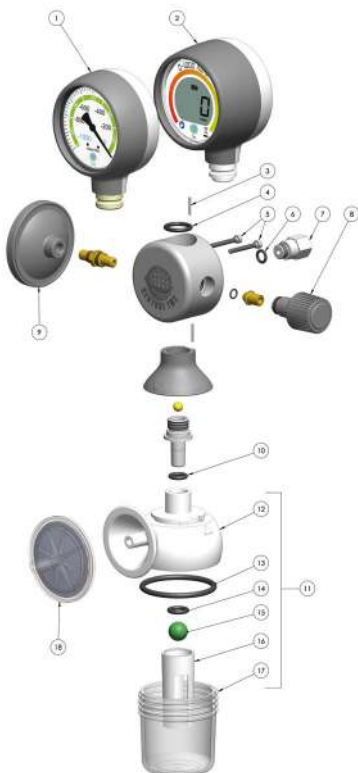
OHMEDA American Standard	VENTURI TM 2 Ejectors	O ₂ 1000mbar - 760mmHg	Air 1000mbar - 760mmHg
Mounted with OHMEDA direct probe 	ANALOG Ejector with 100 ml safety jar, plastic front filter Ejector with 150 ml safety jar, paper filter Ejector with 500 ml safety jar, paper filter Ejector with integrated outlet tubing nipple Ejector with 1/2G outlet tubing nipple	20517 - 20527 20519 - 20529 20521 - 20531 20525 - 20535 20523 - 20533	20516 - 20526 20518 - 20528 20520 - 20530 20524 - 20534 20522 - 20532

Also available in ISO colours.

DISS American Standard	VENTURI TM2 Ejectors	O ₂ 1000mbar - 760mmHg	Air 1000mbar - 760mmHg
Mounted with DISS direct probe 	ANALOG Ejector with 100 ml safety jar, plastic front filter Ejector with 150 ml safety jar, paper filter Ejector with 500 ml safety jar, paper filter Ejector with integrated outlet tubing nipple Ejector with 1/2G outlet tubing nipple DIGITAL Ejector with 100 ml safety jar, plastic front filter Ejector with 150 ml safety jar, paper filter Ejector with 500 ml safety jar, paper filter Ejector with integrated outlet tubing nipple Ejector with 1/2G outlet tubing nipple	20417 - 20427 20419 - 20429 20421 - 20431 20425 - 20435 20423 - 20433 20297 - 20307 20299 - 20309 20301 - 20311 20305 - 20315 20303 - 20313	20416 - 20426 20418 - 20428 20420 - 20430 20424 - 20434 20422 - 20432 20296 - 20306 20298 - 20308 20300 - 20310 20304 - 20314 20302 - 20312

DIN German Standard	VENTURI TM2 Ejectors	O ₂ 1000mbar - 760mmHg	Air 1000mbar - 760mmHg	O ₂ /Air 1000mbar
Mounted with DIN direct probe 	ANALOG Ejector with 100 ml safety jar, plastic front filter Ejector with 150 ml safety jar, paper filter Ejector with 500 ml safety jar, paper filter Ejector with integrated outlet tubing nipple Ejector with 1/2G outlet tubing nipple DIGITAL Ejector with 100 ml safety jar, plastic front filter Ejector with 150 ml safety jar, paper filter Ejector with 500 ml safety jar, paper filter Ejector with integrated outlet tubing nipple Ejector with 1/2G outlet tubing nipple	20377 - 20397 20381 - 20401 20385 - 20405 20393 - 20413 20389 - 20409 20277 - 20287 20279 - 20289 20281 - 20291 20285 - 20295 20283 - 20293	20376 - 20396 20380 - 20400 20384 - 20404 20392 - 20412 20388 - 20408 20276 - 20286 20278 - 20288 20280 - 20290 20284 - 20294 20282 - 20292	20578 20580 20581 20585 20583

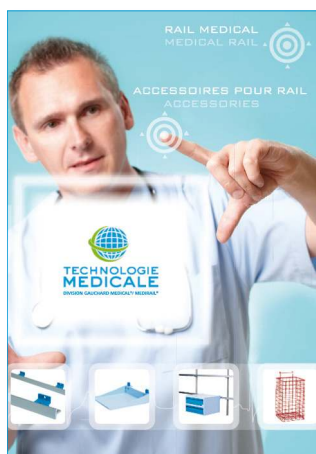
Also available with a rail mounting system.



	Reference	Description
1	18739	0-1000 mbar analog vacuum gauge
	18741	0-250 mbar analog vacuum gauge
	19488	0-760 mmHg analog vacuum gauge
	20149	0-200 mmHg analog vacuum gauge
2	19776	0-1000 mbar digital vacuum gauge
	19778	0-250 mbar digital vacuum gauge
	19779	0-760 mmHg digital vacuum gauge
	19781	0-200 mmHg digital vacuum gauge
3	20200	Pin
4	11415	Vacuum gauge O-ring
5	20199	Vacuum gauge screws
6	11578	Inlet O-ring
	11174	Inlet adaptor 12x100 F
7	11178	Inlet adaptor 1/4G M
	11176	Inlet adaptor 1/8 NPT F
8	20203	Complete knob 1/8 NPT F
9	20195	Air silencer
10	18731	Outlet O-ring
11	18753	100 ml safety jar, complete with cover
12	18690	White cover only
13	11780	Jar O-ring
14	11701	Safety O-ring
15	11698	Safety ball
16	17294	Safety cage
17	17630	100 ml bottle only
18	11813	Antibacterial plastic filter (tube of 10)



Also available



Distributed by

SUCTION
VENTURI TM2 EJECTORS



**TECHNOLOGIE
MEDICALE**

101, rue Vaillant Couturier B.P. 46 F-93136 NOISY-LE-SEC CEDEX France
Tel: 33 (0)1 48 45 58 95 - Fax: 33 (0)1 49 42 90 21 - 33 (0)1 48 45 29 00 - info@technologiemedicale.com
www.technologiemedicale.com